

CLARKS

OEM BROCHURE





OUR FACE MAY HAVE CHANGED BUT WITH OUR WORLD WIDE DESIGN, MANUFACTURING AND MARKETING OFFICES WE ARE WELL STRUCTURED TO ACT QUICKLY TO MARKET DEMANDS.

我們的面貌也許已經改變 但隨著我們遍及全球的設計, 工業以及行銷的完善組織可快速的隨著市場需求行動.

WHETHER FROM OUR NINGBO, CHANGHUA OR UK OFFICES, CLARKS DETERMINATION TO CONTINUALLY DELIVER THE BEST POSSIBLE SERVICE FOR OUR CUSTOMERS STILL MEANS OUR REPUTATION IS SECOND TO NONE'

不管從我們寧波, 彰化 或是英國辦事處, 克拉克剎車系統 堅決給客人最好的服務, 就如同我們的聲譽一樣.

TONY WRIGHT
MANAGING DIRECTOR



CONTENTS

- 04 SKELETAL DISC BRAKE SYSTEM
- 06 S2 DISC BRAKE SYSTEM
- 08 CMD-7 MECHANICAL BRAKE SYSTEM
- 09 CMD-8 MECHANICAL BRAKE SYSTEM
- 10 CMD-9 MECHANICAL BRAKE SYSTEM
- 11 LOCK-ON GRIPS
- 12 RUBBER GRIPS
- 13 HYDRAULIC SERVICING



SKELETAL[®]

Hydraulic Brake System



- Lightweight 2 piston hydraulic system, 340 grams
- Both Bite and Reach adjustment giving a truly custom brakes set up
- Powerful braking combining Clarks sintered disc pads
- Radial style lever to maximise space on the bars
- Easy bleed system using DOT 4 fluid for optimum performance under extreme conditions
- Designed in the UK, SKELETAL is uniquely styled and available in the latest colours
- Comes with colour matched PTFE hoses as standard

TECHNICAL SPECIFICATION SX HYDRAULIC DISC BRAKE

Lever Type	Radial style lever, left and Right handed, open style reservoir
Lever Functionality	Allen key adjustment for both Lever reach and Bite adjustment
Caliper Type	2 piston, Single Cast, Zinc alloy caliper
Fluid Type	DOT 3/4 fluid only
Mounts	International Standard (51mm) or Post Mount
Bracket Bolts	M6x20 allen key bolt, as standard
Rotors	160mm, 180mm, 185mm and 203mm rotors in Round or wavey
Rotor Bolts	Torx style bolt (X6)
Disc Pads	Sintered pads as standard (Replacement pads VRX815C)
Colour Options	Artic White, Pitch Black, Hot Orange, Man Pink, Vibrant Green, Lite Blue, Blood Red
Hose	PTFE hoses, all colours available
System Weights	System Standard weighs 340 grams
BS EN Standards	Exceeds compliance requirements, BS EN 14766 certified (Alc.P:118025:0509) REAch/CPSIA compliant
Features	Designed in the United Kingdom, lightweight and powerful braking system

Replacement Parts

SKELETAL SINGLE PIECE ZINC ALLOY CAST CALIPER ASSEMBLY

PART NO. 120032008
203MM FRONT IS MOUNT BRACKET

PART NO. GB/T97.1

PART NO. GB/T97.1

PART NO. GB/T20.2

PART NO. GB/T20.1

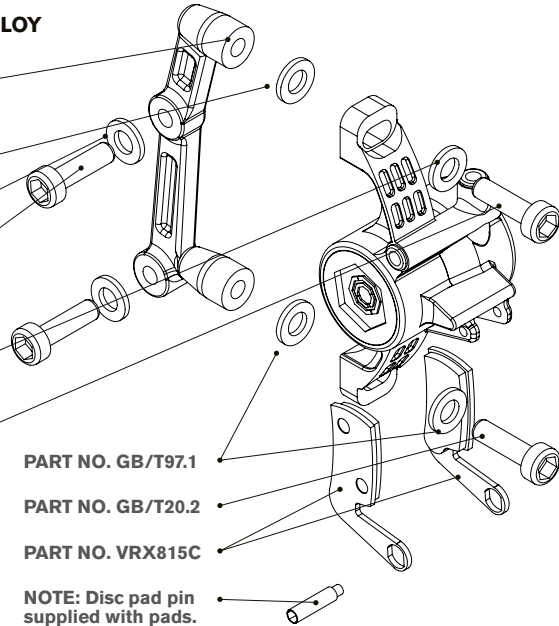
PART NO. GB/T20.2

PART NO. GB/T97.1

PART NO. GB/T20.2

PART NO. VRX815C

**NOTE: Disc pad pin
supplied with pads.**



SKELETAL LEVER/PISTON ASSEMBLY

PART NO. 120071056
DIAPHRAGM COVER

PART NO. 120031076
COVER BOLT

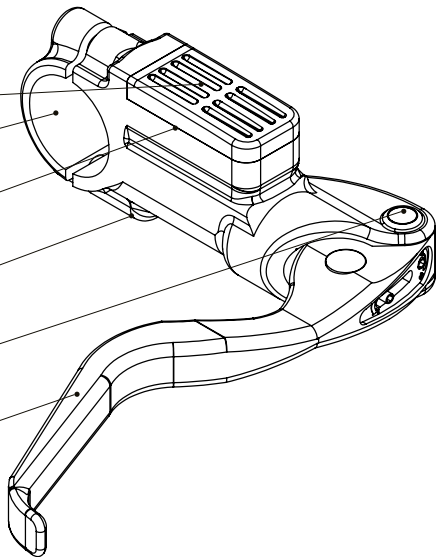
PART NO. 120031003
SPLIT C CLAMP

PART NO. 120071056
DIAPHRAGM COVER

PART NO. 120031004
SPLIT C CLAMP BOLT

PART NO. 120071102
120071006

PART NO. 120075000
LEVER ASSEMBLY



ALL CLARKS HYDRAULIC BRAKES SYSTEMS ARE SERVICED AND SUPPORTED BY AN EXTENSIVE RANGE OF REPLACEMENT PARTS AND UPGRADE OPTIONS. IN THE SERVICE SECTION YOU WILL FIND ALL THE PRODUCTS AVAILABLE WITHIN OUR CURRENT RANGE.



Hydraulic Brake System



- Reach adjustment for greater functionality
- Powerful braking combining Clarks sintered disc pads.
- Easy bleed system using DOT 4 fluid for optimum performance under extreme conditions.
- Designed in the UK and available in the latest colours

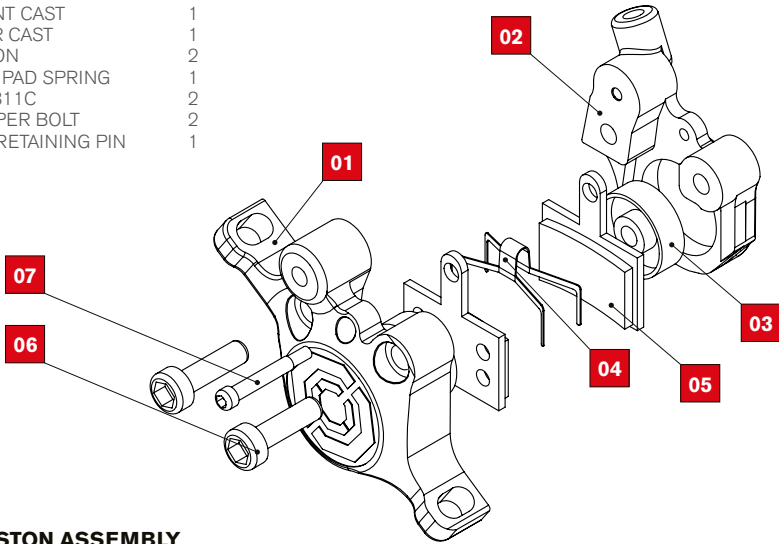
TECHNICAL SPECIFICATION S2 HYDRAULIC DISC BRAKE

Lever Type	Flip-Flop style lever
Lever Functionality	Lever reach adjustment via a finger operated adjuster
Caliper Type	2 piece, Zinc alloy calliper
Fluid Type	DOT 3/4 fluid only
Mounts	International Standard (51mm) or Post Mount
Bracket Bolts	M6x20 allen key bolt, as standard
Rotors	160mm,180mm,185mm and 203mm rotors in Round or wavey
Rotor Bolts	Torx style bolt (X6)
Disc Pads	Sintered pads as standard (Replacement pads VRX811C), Organic pads available (VX811C)
Colour Options	Black, White, Red, Silver, Grey
Hose	Silver Braided (PTFE options available)
System Weights	System Standard weighs 430 grams
BS EN Standards	Exceeds compliance requirements, BS EN 14766 certified (Alc.P:104692:0807) REACH/CPSIA compliant
Features	Designed in the United Kingdom

Replacement Parts

S2 CALIPER

PART	DESCRIPTION	QUANTITY
01	FRONT CAST	1
02	REAR CAST	1
03	PISTON	2
04	DISC PAD SPRING	1
05	VRX811C	2
06	CALIPER BOLT	2
07	PAD RETAINING PIN	1



S2 LEVER/PISTON ASSEMBLY

PART NO. 120031005
S2 LEVER END

PART NO. 120031006
/1200311002

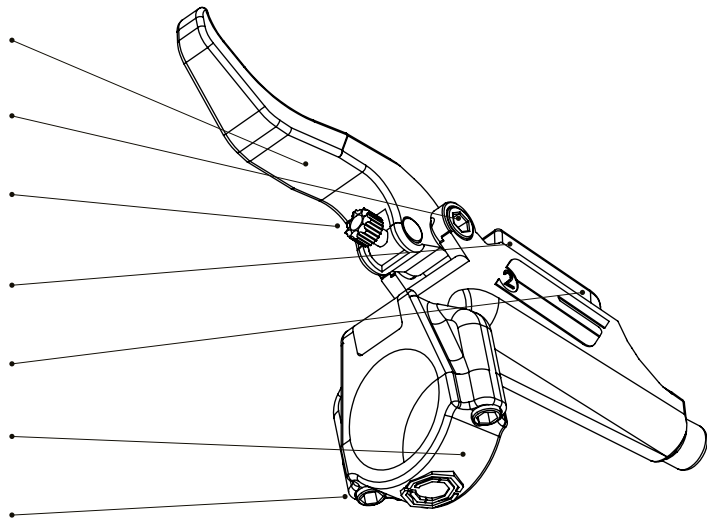
NOTE: FINGER TURN
REACH ADJUSTMENT
SCREW

PART NO. 120011002
S2 RESEVOIR COVER

PART NO. 120011056
DIAPHRAGM S2

PART NO. 120031003
SPLIT C CLAMP

PART NO. 120031004
SPLIT C CLAMP BOLT



ALL CLARKS HYDRAULIC BRAKES SYSTEMS ARE SERVICED AND SUPPORTED BY AN EXTENSIVE RANGE OF REPLACEMENT PARTS AND UPGRADE OPTIONS. IN THE SERVICE SECTION YOU WILL FIND ALL THE PRODUCTS AVAILABLE WITHIN OUR CURRENT RANGE.

CMD 7 Mechanical Brake



Specifically designed to meet the requirements of the production line environment, the CMD-7 offers straight forward fitting and adjustment technology allowing all the adjustment to be made from the front with a single allen key. Easy to adjust and hard wearing this brake is will deliver time after time.

TECHNICAL SPECIFICATION CMD 7 MECHANICAL BRAKE

Caliper Type	Fixed single piece cast caliper body
Mounts	International Standard (51mm)
Bracket Bolts	M6x20 allen key bolt, as standard
Rotors TH-2	Material: 1Cr13, Sizes 140mm, 160mm, 180mm Wavey Design
Rotor Bolts	Allen key bolt (X6)
Disc Pads	VX840C Organic pad
Colour Options	Available in colour options
System Weights	200 grams caliper weight
BS EN Standards	Exceeds compliance requirements, BS EN 14766 certified (Alc.P:117924:0409) REAch/CPSIA compliant
Features	Easily fitted and adjusted from the front of the caliper, allen key type adjusters

SERVICE PART REPLACEMENTS

VX840C	Organic Disc Pad
Rotor TH-2	140mm, 160mm, 180mm, (1Cr13) Wavey, (164grams)

CMD 8 Mechanical Brake

TH-2



UL 160/180MM



Lightweight and truly versatile the CMD-8 has been stripped of excess weight to create a brake suitable for mountain bikes or Hybrid bikes alike. Available in 140mm, 160mm and 180mm options.

TECHNICAL SPECIFICATION CMD 8 MECHANICAL BRAKE

Caliper Type	Fixed single piece cast caliper body
Mounts	International Standard (51mm)
Bracket Bolts	M6x20 allen key bolt, as standard
Rotors TH-2	Material: 1Cr13, Sizes 140mm, 160mm, 180mm Wavey Design
Rotor Bolts	Allen key bolt (X6)
Disc Pads	VX849C
Colour Options	Available in colour options
System Weights	220 grams caliper weight
BS EN Standards	Exceeds compliance requirements, BS EN 14766 certified REACh/CPSIA compliant
Features	Easily fitted and adjusted and cable tensioner

SERVICE PART REPLACEMENTS

VX849C	Organic Disc Pad
Rotor TH-2	140mm, 160mm, 180mm, (1Cr13) Wavey, (164grams)
Rotor UL (160/180)	160mm (119grams), 180mm (134grams), (1Cr13) Wavey

CMD 9 Mechanical Brake



This brake has been designed around the concept that; improved adjustment capability will inevitably improve the performance of the brake. With front pad adjustment the CMD-9 will allow the pads to be located even closer to the surface of the rotor.

TECHNICAL SPECIFICATION CMD 9 MECHANICAL BRAKE

Caliper Type	Fully adjustable caliper
Mounts	International Standard (51mm)
Bracket Bolts	M6x20 allen key bolt, as standard
Rotors TH-2	Material: 1Cr13, Sizes 140mm, 160mm, 180mm Wavey Design
Rotor Bolts	Allen key bolt (X6)
Disc Pads	VX838C Organic pad
Colour Options	Available in colour options
System Weights	180 grams caliper weight
BS EN standards	Exceeds compliance requirements, BS EN 14766 certified (Alc.P:104881:0807) REAch/CPSIA compliant
Features	Front pad adjustment and cable tensioner

SERVICE PART REPLACEMENTS

VX838C	Organic Disc Pad
Rotor TH-2	140mm, 160mm, 180mm, (1Cr13) Wavey, (164grams)

LOCK-ON GRIPS

VICE 
LOCK-ON



CLO201-B Black lock on grip with Black ends



CLO201-ANO-BLK-BLUE Black lock on grip with blue anodised end



CLO201-ANO-BLK-GREEN Black lock on grip with green anodised end



CLO201-ANO-BLK-ORANGE Black lock on grip with orange anodised end



CLO201-ANO-BLK-RED Black lock on grip with red anodised end



CLO201-ANO-BROWN-GREY Brown lock on grip with grey anodised end



CLO201-ANO-W-GREEN White lock on grip with green anodised end



CLO201-ANO-W-RED White lock on grip with red anodised end

RUBBER GRIPS



C44 City Grip Black with grey inner, larger ergonomic style grip



C47 90mm long Grip



C49 Two colour D2 grip (Black with grey ends)



C49 Two colour D2 grip (Black with green ends)



C49 Two colour D2 grip (Black with orange ends)



C49 Two colour D2 grip (Orange with black ends)



C49 Two colour D2 grip (Red with black ends)



C76 Black D1 grip



C83 BMX Grips with closed ends



CL - GR Sport Foam grips, inc 4 handle bar grips with black end caps



HB-1 Sports bars, Black Handle Bar Tape

HYDRAULIC SERVICING



COMPONENTS
UPGRADES
SPARES



**160mm/180mm/
185mm/203mm Round**
Wavey rotor



**160mm/180mm/
185mm/203mm Round**
Round rotor



**UL 160mm/180mm/
185mm/203mm**
Ultra lite weight rotor



2P/BLEED KIT
Hydraulic bleeding kit for
Clarks S2 braking system



SKELETAL BLEED KIT
Hydraulic bleeding kit for
Clarks Skeletal braking
system



SPARES TRAY Complete
service parts for Skeletal
and S2 brakes



**HH1-BLACK/WHITE/ORANGE/RED/BLUE/
PINK/LIGHT GREEN**
Hydraulic hoses. Coloured hoses are available to colour
match brakes or offer more choice.

HYDRAULIC SERVICING

SPARES TRAY	
PART NUMBER	ITEM
VRX811C	Disc Pad (S2)
VRX815C	Disc Pad (SX)
120030002	Rotor Bolt (Torx)
GB/T20.2	M6x20 Bracket Bolt
GB/T97.1	Washer
120031003	Split C Clamp
120031004	Bolt
31203001/31203002/120030051/GB3452.1	Olive Part and Dust Cover (S2)
120012019/763152051	Bleed Nipple with Cover
120071006/120031102	SX Lever Bolt
120031006/120031102	S2 Lever Bolt
120071002	SX Reservoir Cover
120031076	Reservoir Cover Bolt (Torx)
120011002	S2 Reservoir Cover
120010053	Pad Spacer
120075000	SX Lever Assembly
120011056	S2 Diaphragm
120071056	SX Diaphragm
120031005	S2 Lever Assembly

ROTOR OPTIONS		
PART NUMBER	ITEM	DESCRIPTION
UL160	160mm Ultra Lite Weight Rotor	1Cr13, 119 grams
UL180	180mm Ultra Lite Weight Rotor	1Cr13, 134 grams
160mm Round	160mm Round Rotor	Rotor plus 6 'Torx' Headed Bolts
160mm Wavy	160mm Wavy Rotor	Rotor plus 6 'Torx' Headed Bolts
180mm Round	180mm Round Rotor	Rotor plus 6 'Torx' Headed Bolts
180mm Wavy	160mm Wavy Rotor	Rotor plus 6 'Torx' Headed Bolts
185mm Round	185mm Round Rotor	Rotor plus 6 'Torx' Headed Bolts
185mm Wavy	185mm Wavy Rotor	Rotor plus 6 'Torx' Headed Bolts
203mm Round	203mm Round Rotor	Rotor plus 6 'Torx' Headed Bolts
203mm Wavy	203mm Wavy Rotor	Rotor plus 6 'Torx' Headed Bolts

BLEED KITS	
PART NUMBER	ITEM
Skeletal/Bleed Kit	Skeletal Hydraulic Bleeding Kit
2P/Bleed Kit	S2 Hydraulic Bleeding Kit

SERVICE BRACKET & SPARES

SERVICE BRACKET CONFIGURATION		
PART NUMBER	ITEM	DESCRIPTION
120032008B	160mm IS Front Bracket	160mm IS Front Bracket
120030002	Rotor Bolts (X6)	Rotor Bolts (X6)
120030005B/120030005C	Post Mount Bolts (X2)	Post Mount Bolts (X2)
GB/T20.2	Bracket Bolts (X2)	Bracket Bolts (X2)
220032008B	160mm IS Rear Bracket	160mm IS Rear Bracket
220032008C	180mm Post Mount Bracket	180mm Post Mount Bracket
120032008E	180mm IS Front Bracket	180mm IS Front Bracket
220032008D	180mm IS Rear Bracket	180mm IS Rear Bracket
120032008C	185mm Post Mount	185mm Post Mount
220032008A	185mm IS Front Bracket	185mm IS Front Bracket
120032008A	185mm IS Rear Bracket	185mm IS Rear Bracket
120032008D	203mm Post Mount Bracket	203mm Post Mount Bracket
120032008	203mm IS Front Bracket	203mm IS Front Bracket
220032008	203mm IS Rear Bracket	203mm IS Rear Bracket

COLOURS OF
THE
RAINBOW



CLARKS

WWW.CLARKSCYCLESYSTEMS.COM

Clarks Cycle Systems Ltd (UK)
Unit 1, The Old Dairy,
Pessall Lane, Edingale,
Nr Tamworth, Staffordshire,
B79 9JL
Tel: +44 (0) 1827 382800

Clarks Cycle Systems Ltd
Ningbo Office
Room 202, 99# Building,
Lane 819#, Ningbo, China,
315040
Tel: 0086-013685875301

Clarks Cycle Systems Ltd
Taiwan Office
3F., No.218, Sanmin E. St.,
Yuanlin Town, Changhua
510-44, Taiwan (R.O.C)
Tel: +886.(0)919.236.337